



# GMT MONTHLY MEMBERSHIP PROGRESS REPORT

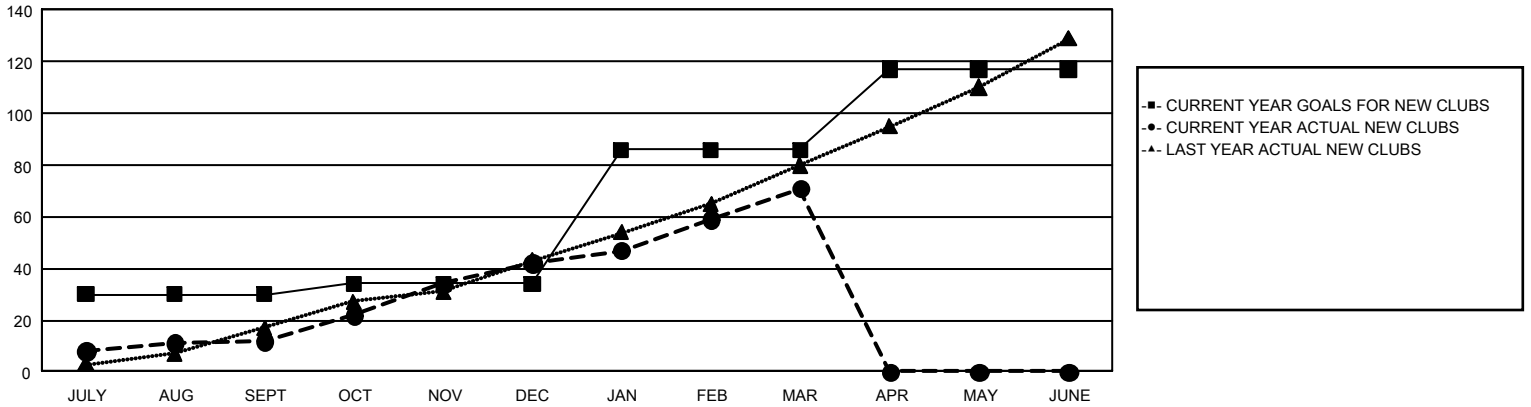
## GAT Constitutional Area 8

Results as of: 3/31/2026

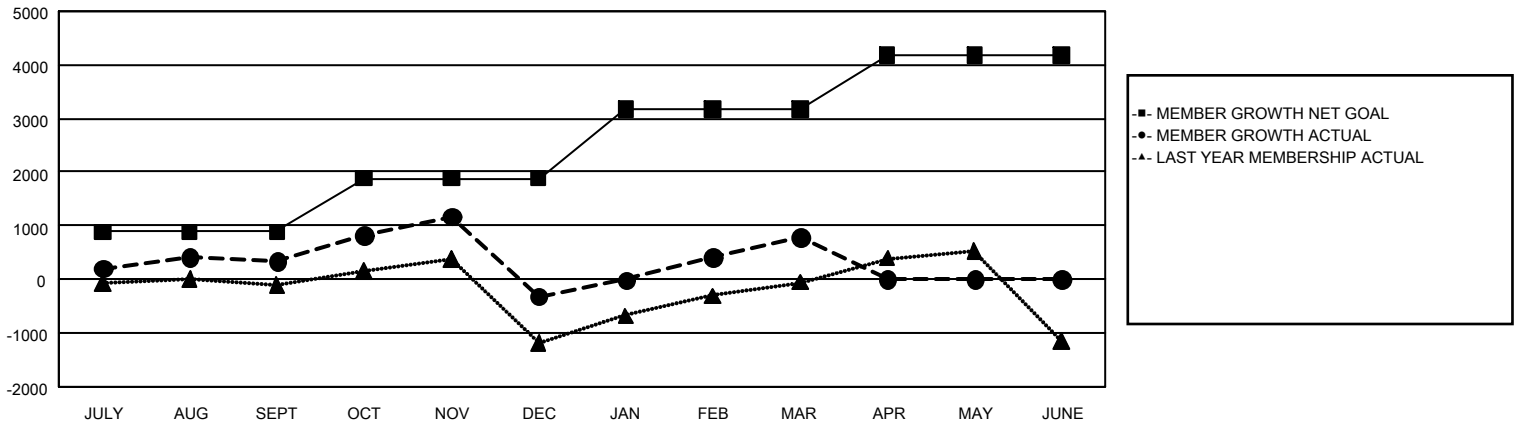
REPORT DOES NOT INCLUDE CLUBS IN UNDISTRICTED AREAS.

Clubs				Members			
RESULTS FOR 2025-2026				RESULTS FOR 2025-2026			
QUARTER	NEW CLUB GOAL	NEW CLUBS	DROPPED CLUBS	QUARTER	MEMBER GROWTH NET GOAL	MEMBER GROWTH ACTUAL	DROPPED MEMBERS ACTUAL (including transfers)
JULY/AUG/SEPT	30	12	6	JULY/AUG/SEPT	886	1,844	1,222
OCT/NOV/DEC	4	30	59	OCT/NOV/DEC	998	2,296	2,698
JAN/FEB/MAR	52	29	11	JAN/FEB/MAR	1,289	2,131	725
APR/MAY/JUNE	31	0	0	APR/MAY/JUNE	1,013	0	0

**GOALS AND ACTUAL NEW CLUBS CUMULATIVE**



**GOALS AND ACTUAL MEMBERS CUMULATIVE**



<b>DROPPED CLUBS: 75</b>	<b>912 CLUBS OF 1,702 ADDED 1 OR MORE NEW MEMBERS</b>	<b><u>GENDER DISTRIBUTION</u></b> MALE                    21,513 (57.84%) FEMALE                   15,649 (42.08%)
<b><u>DROPPED MEMBERS</u></b> DECEASED                    100 CLUB CANCELLED                961 OTHER                            3,576 <hr/> TOTAL                            4,637	<a href="#">CLICK HERE FOR CUMULATIVE MEMBERSHIP DATA</a>	TOTAL FAMILY UNIT MEMBERS                    4,860  FAMILY MEMBERS PAYING HALF DUES                    2,876